

# Peninsular

R E S I D E N C E S

Construction Update  
20<sup>th</sup> December 2018



**H** **CAP**  
DEVELOPMENTS

**M**  
MARQUEE  
DEVELOPMENT  
PARTNERS

## CONSTRUCTION UPDATE – December 2018

Date: 20/12/2018

Prepared by: Marquee Development Partners

Builder/Contractor: Rawcorp

Project Address: 5-7 Peninsular Drive, Surfers Paradise

Construction Commencement Date: 18<sup>th</sup> June 2018

Anticipated Completion Date: September – October 2019

### Construction Update

Despite some inclement weather throughout December, Rawcorp have progressed extremely well and remain ahead of schedule. Construction works will continue up to 21st December 2018, before taking a break and recommencing on the 7th January 2019. Rawcorp will finish the year by pouring the Level 6 slab, which caps of a productive year for the construction team.

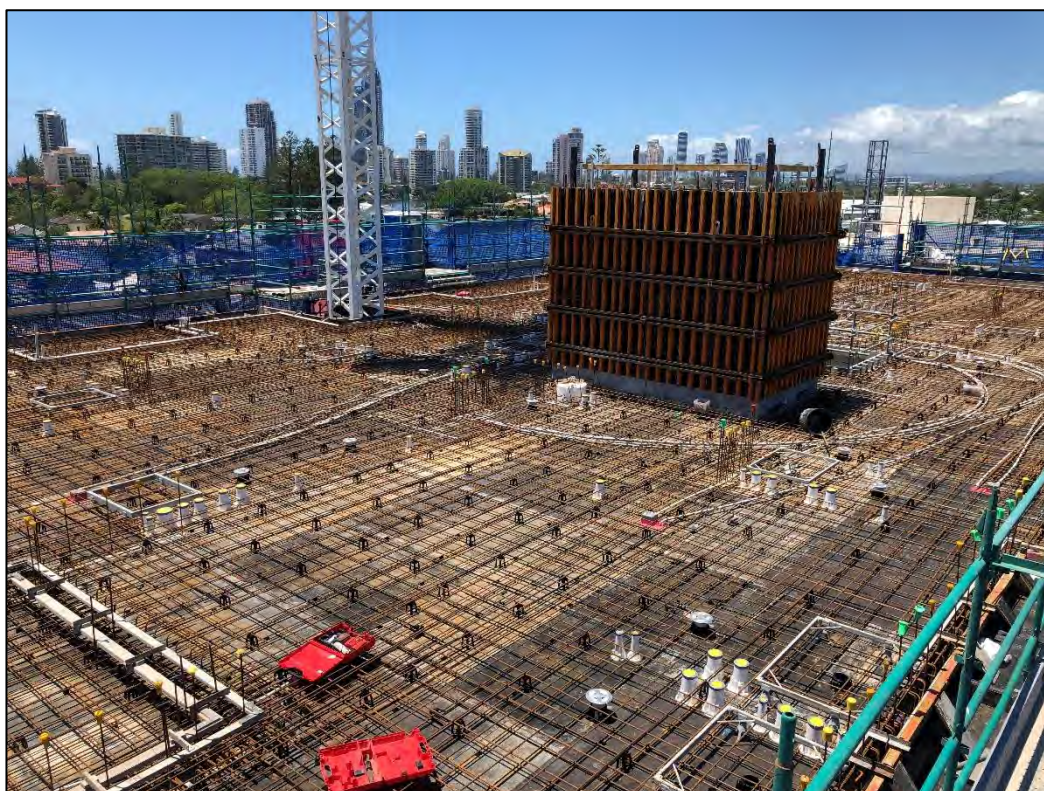
Current activities on site:

- Ground and Level 1 car parking areas are utilised as storage space for materials and equipment.
- Level 2-4 have ceiling and partition crews sheeting the frames, glazing installation, plastering and final rough-in of electrical and hydraulic services.
- Level 5 is back-propped in preparation for the Level 6 pour.
- Level 6 reinforcing has been laid and Rawcorp will be pouring the slab on the 20th December.
- Rawcorp will look to continue next year by pouring the level 7 slab on the 17th January.





Street view of Peninsular Drive frontage



Level 6 slab prepared for concrete pour





Living rooms with glazing installed and plastering completed



Southern view across Gold Coast Broadwater



South East view across Gold Coast Broadwater



Project Renders

